



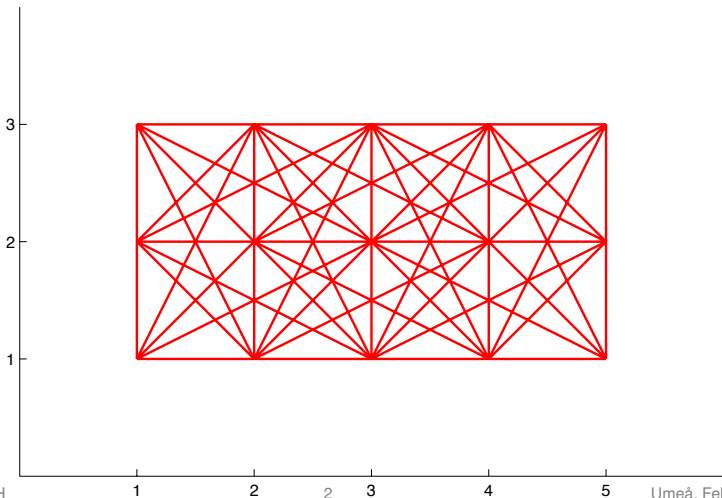
Optimization of truss topology by linear- and quadratic programming: Some pictures of optimal solutions

Krister Svanberg

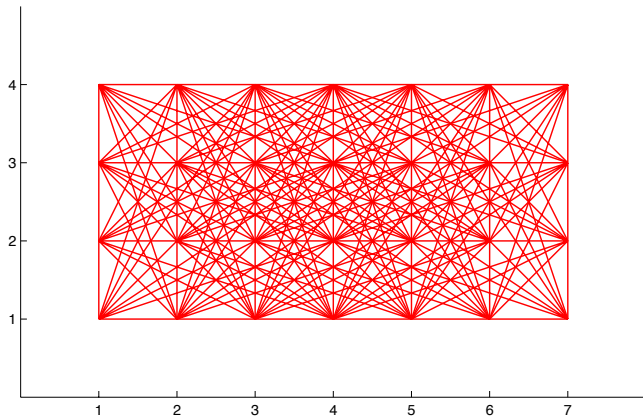
Optimization and Systems Theory
KTH Royal Institute of Technology
Stockholm, Sweden

Umeå, Feb 18, 2016

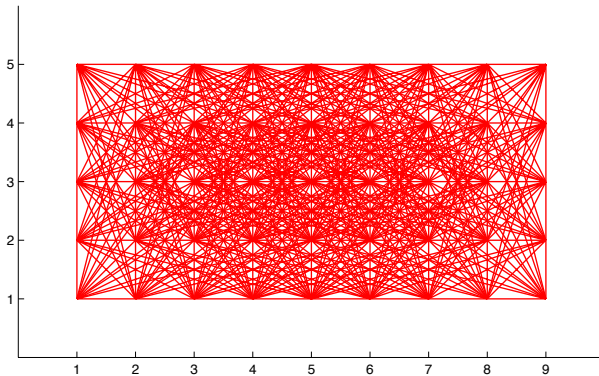
15 nodes and 58 bars



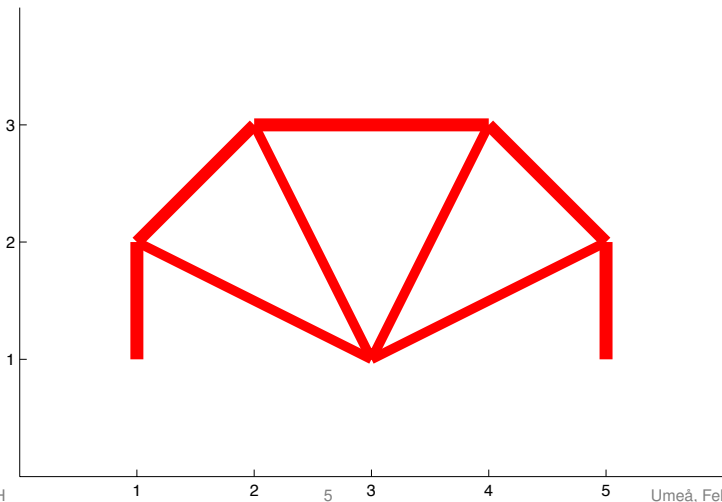
28 nodes and 197 bars



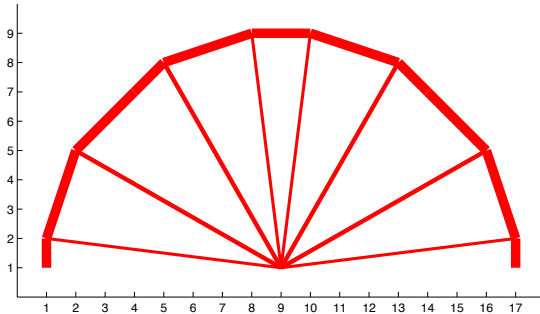
45 nodes and 476 bars



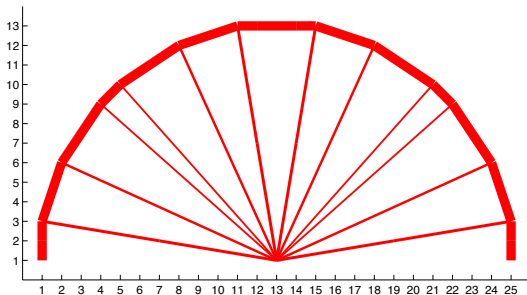
15 nodes and 58 bars



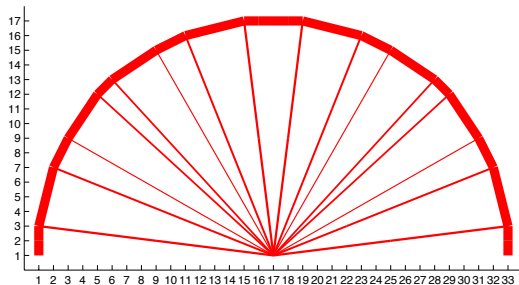
153 nodes and 5424 bars



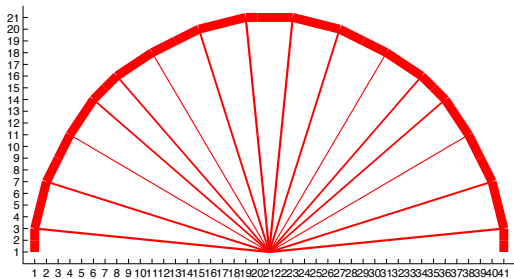
325 nodes and 23 948 bars



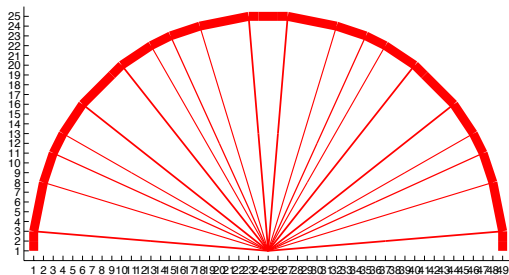
561 nodes and 71 072 bars



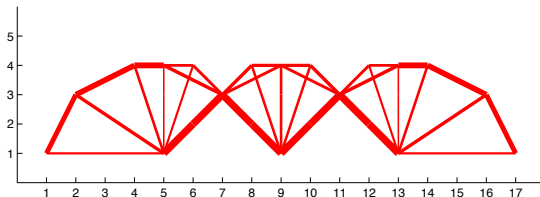
861 nodes and 169 796 bars



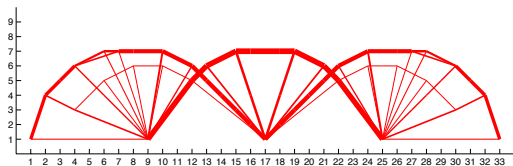
1225 nodes and 341 160 bars



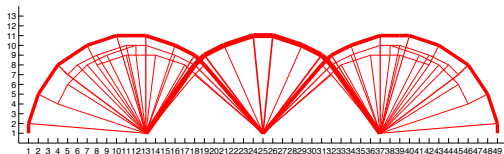
85 nodes and 1028 bars



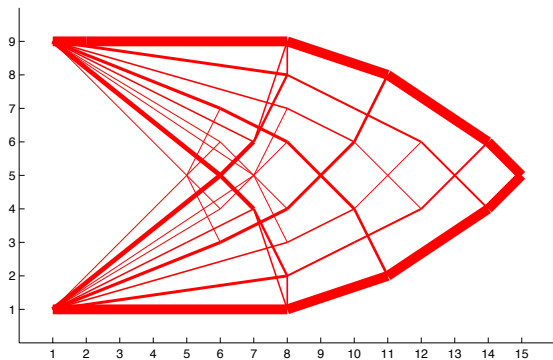
297 nodes and 12 192 bars



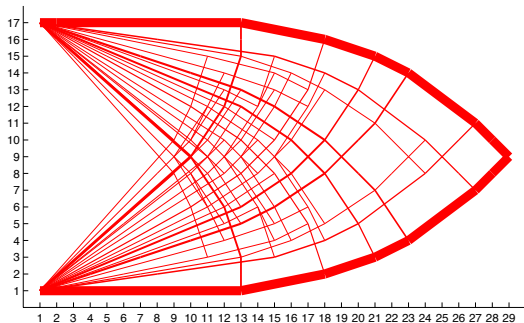
637 nodes and 54 356 bars



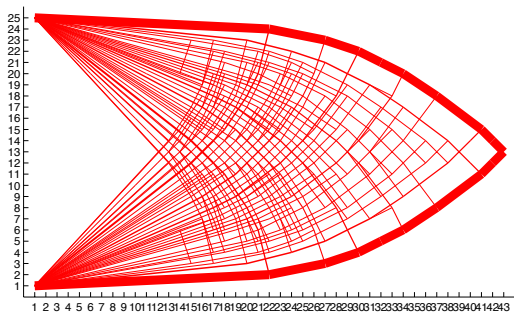
135 nodes and 4578 bars



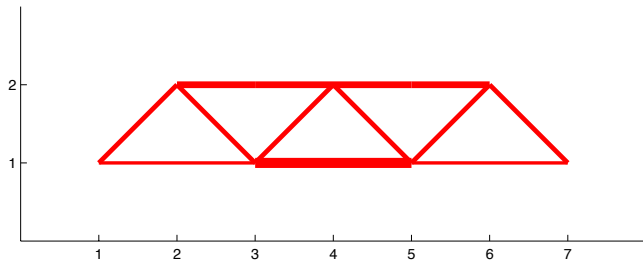
493 nodes and 59 668 bars



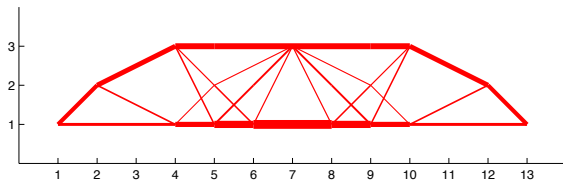
1075 nodes and 285 630 bars



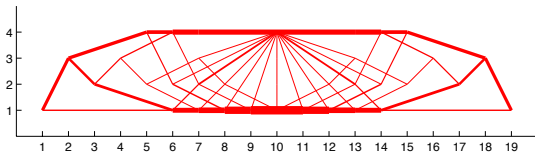
14 nodes and 31 bars



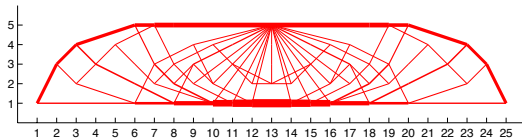
39 nodes and 178 bars



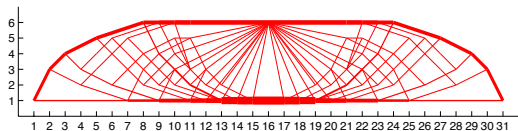
76 nodes and 641 bars



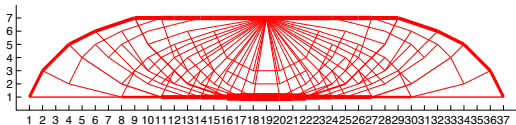
125 nodes and 1580 bars



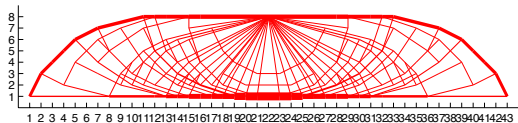
186 nodes and 3643 bars



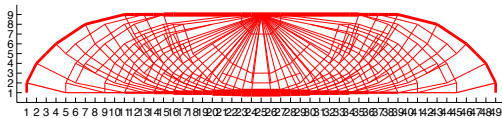
259 nodes and 6418 bars



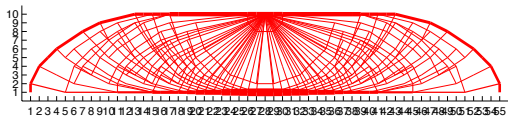
344 nodes and 11 887 bars



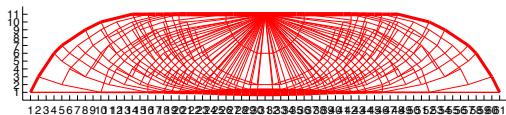
441 nodes and 18 960 bars



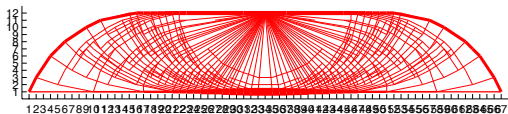
550 nodes and 29 611 bars



671 nodes and 42 342 bars



804 nodes and 63 319 bars



949 nodes and 84 764 bars

